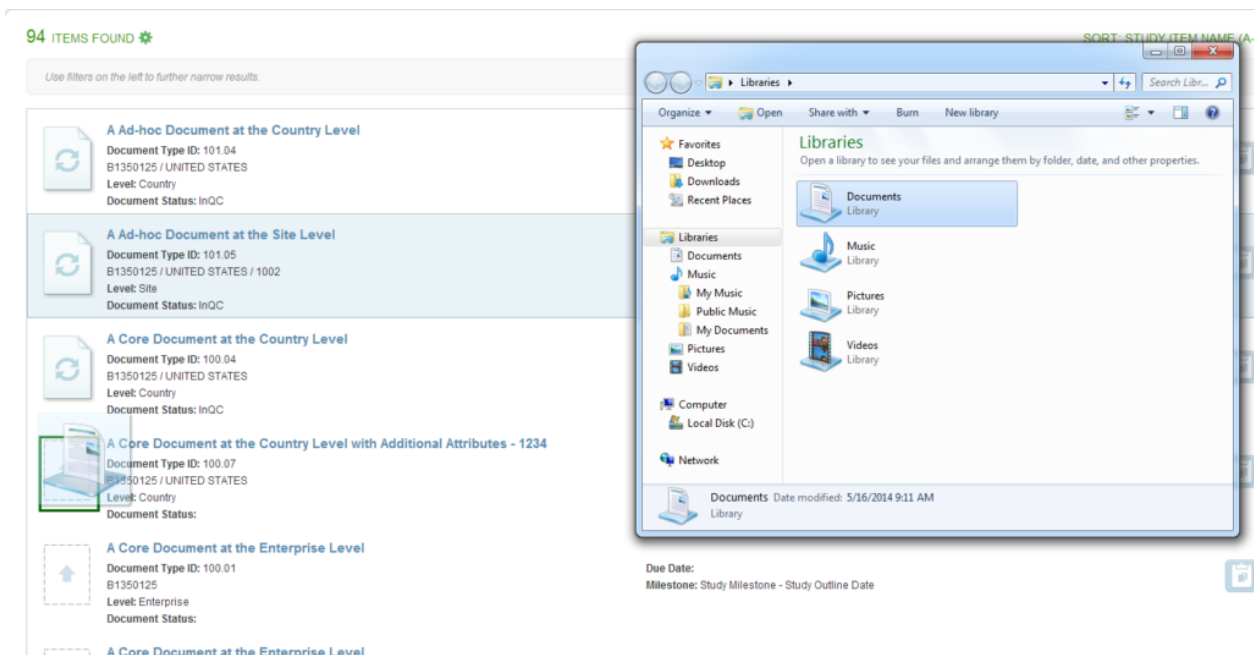


Drag and Drop to Study Item

If you are using Google Chrome or another compatible browser and need to upload a document to a study item, you can drag a file from your file explorer and drop it directly onto the [Study Item](#) as shown below.



The document will go to the user's [Work Area](#) for [Indexing](#). You can drag and drop as many files as you like before indexing.

If a study item already has finalized content, the dropped file will become a new version once finalized.

Note: Drag and Drop capabilities will be disabled for program level study items, enterprise level study items, ad hoc study items, proposed study items, and study items requiring mediation (i.e., study items missing required field values as a result of an Update Placeholders operation).